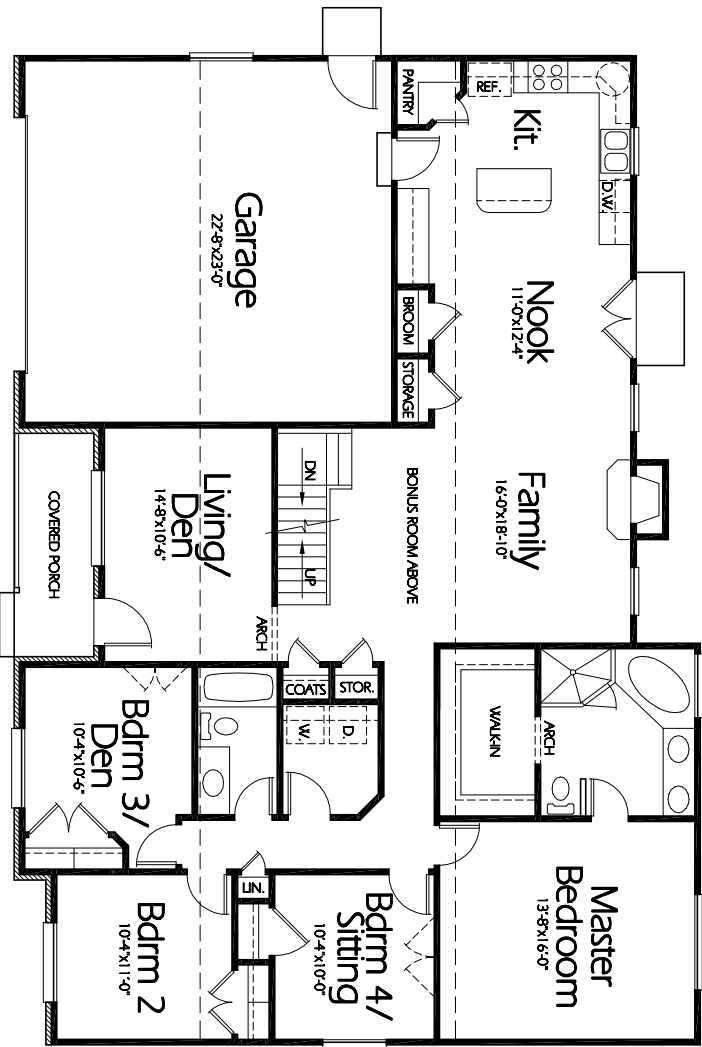


Front Elevation

R-1879b



Main Level

**Plan R-1879b**

Overall Dimensions 62'-0" x 43'-0"  
 1879 Finished Sq. Feet  
 Room Sizes Shown Are Approximate



94 North 100 West - Bountiful, Utah 84010  
 Phone: (801) 288-2505 - Fax: (801) 288-3077  
 www.heartstonedesign.com